



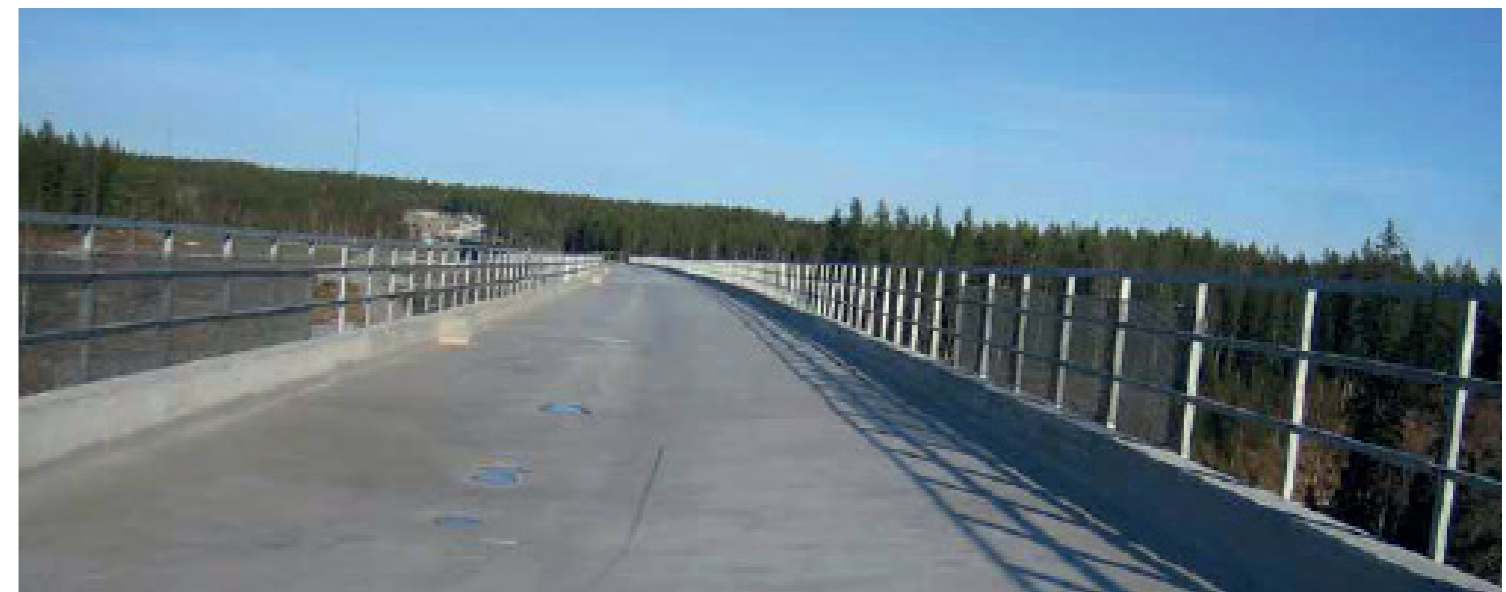
PROJECT REFERENCE SHEET

PROJECT DETAILS

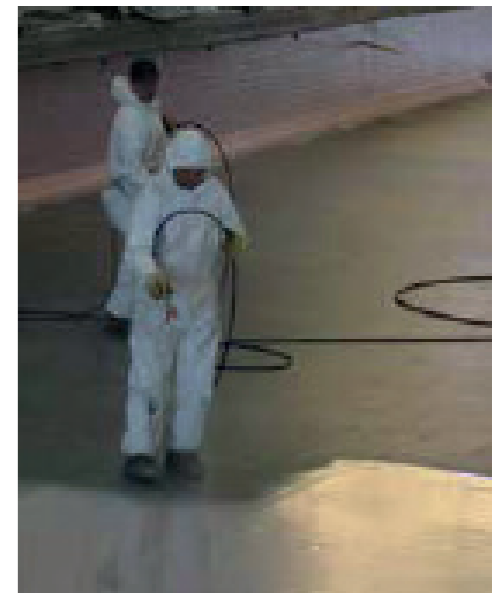
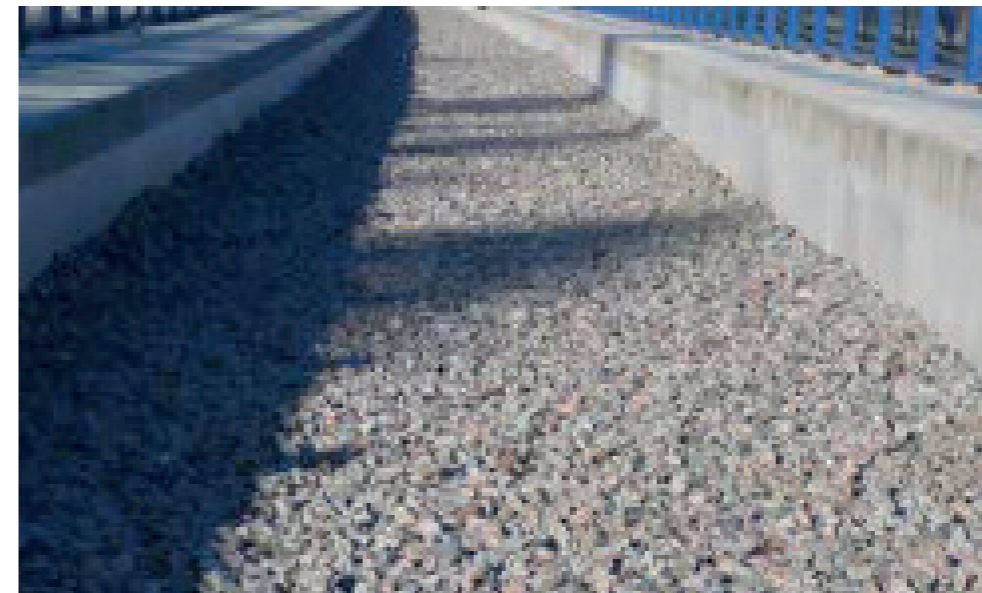
PROJECT: BOTHNIA RAILWAY
LOCATION: ULDUM - SEWDEN
REALIZATION: 2005
AREA: 19,400M²



PROJECT: BOTHNIA RAILWAY



MATACRYL[®] RB APPLIED



UK & Ireland Address

Kingston House, 3 Walton Road, Pattinson North, Washington, Tyne & Wear, UK
T: +44(0)191 416 8360 E: info@uslspecialityproducts.com
W: www.matacryl.com / www.uslspecialityproducts.com



UK & Ireland Address

Kingston House, 3 Walton Road, Pattinson North, Washington, Tyne & Wear, UK
T: +44(0)191 416 8360 E: info@uslspecialityproducts.com
W: www.matacryl.com / www.uslspecialityproducts.com