



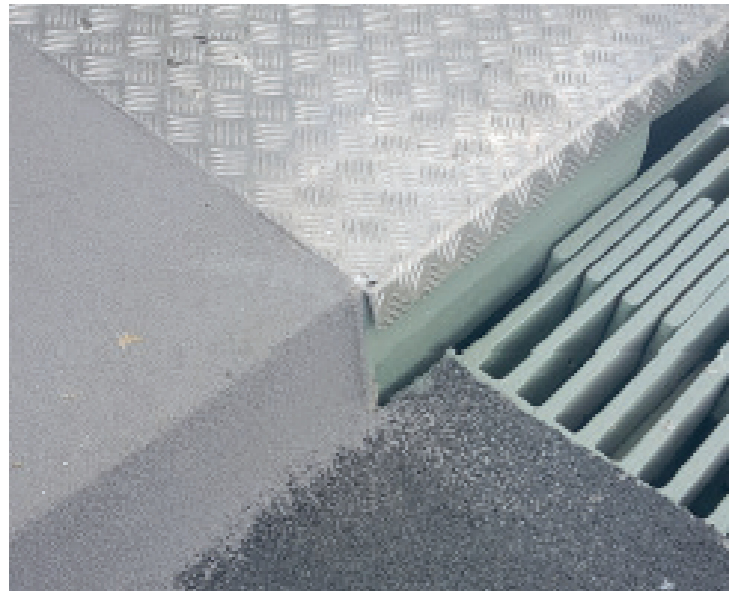
PROJECT REFERENCE SHEET

PROJECT DETAILS

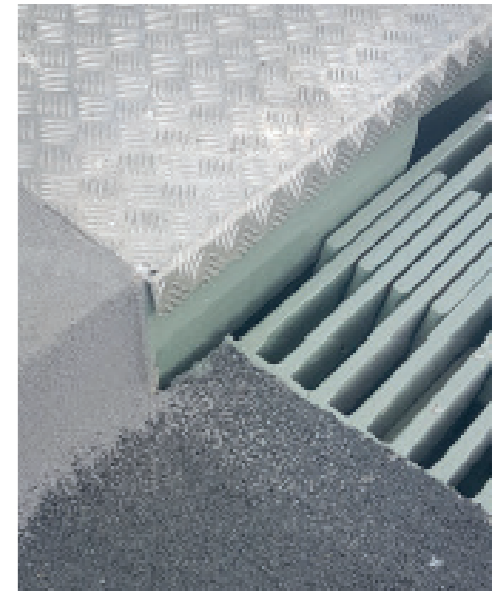
PROJECT: BUSCULE STEEL BRIDGE
LOCATION: NOWY DWOR GDANSK,
POLAND
REALIZATION: 2019
AREA: 200M²



PROJECT:
**SMALL ICONIC
BUSCULE STEEL BRIDGE
WATERPROOFING**



**MATACRYL[®] WS
APPLIED**



UK & Ireland Address

Kingston House, 3 Walton Road, Pattinson North, Washington, Tyne & Wear, UK
T: +44(0)191 416 8360 E: info@uslspecialityproducts.com
W: www.matacryl.com / www.uslspecialityproducts.com



UK & Ireland Address

Kingston House, 3 Walton Road, Pattinson North, Washington, Tyne & Wear, UK
T: +44(0)191 416 8360 E: info@uslspecialityproducts.com
W: www.matacryl.com / www.uslspecialityproducts.com