



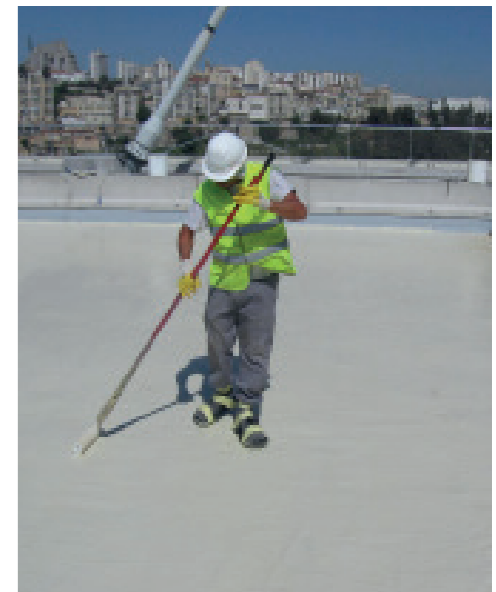
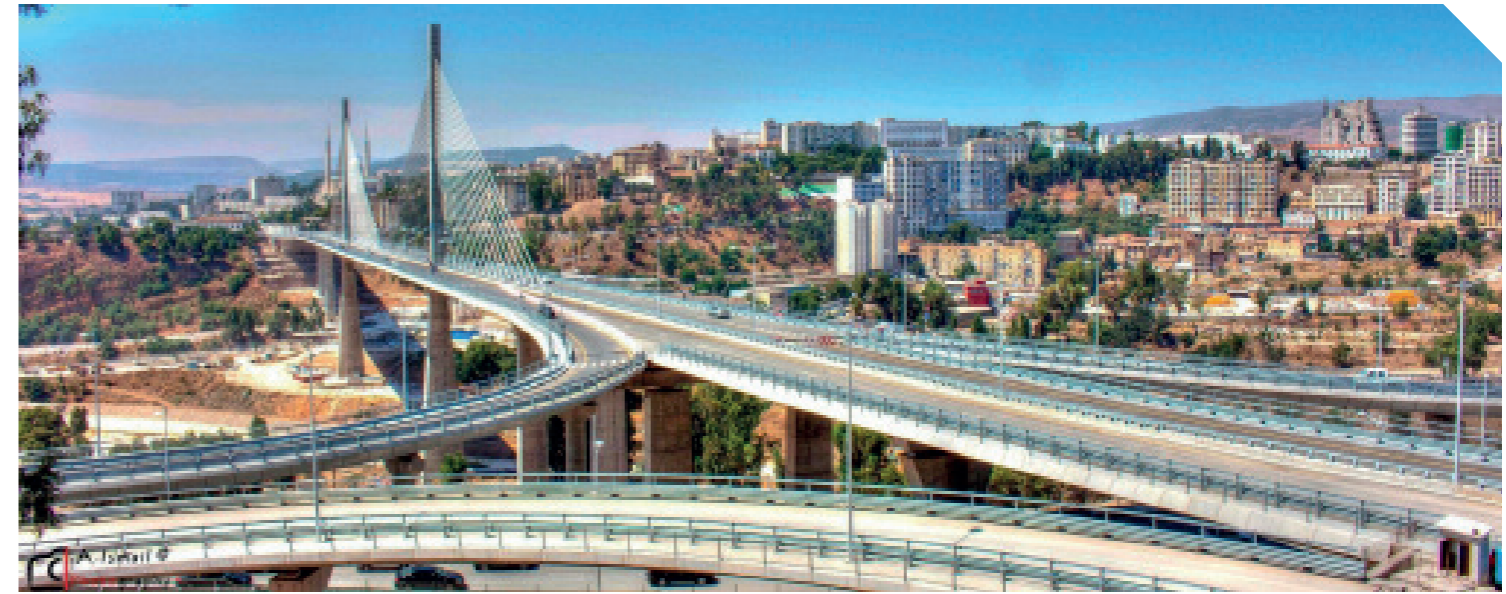
## PROJECT REFERENCE SHEET

### PROJECT DETAILS

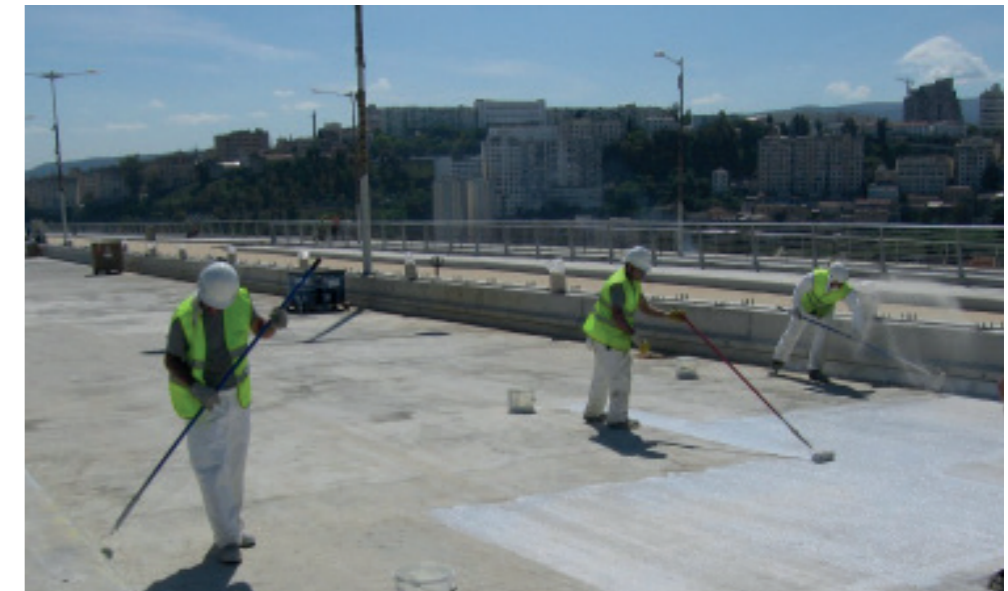
PROJECT: TRANS-RHUMEL VIADUC  
LOCATION: CONSTATINE, ALGERIA  
REALIZATION: 2014  
AREA: 26,000 M<sup>2</sup>



### PROJECT: TRANS-RHUMEL VIADUC



### MATACRYL<sup>®</sup> WPM & WS APPLIED



#### UK & Ireland Address

Kingston House, 3 Walton Road, Pattinson North, Washington, Tyne & Wear, UK  
T: +44(0)191 416 8360 E: info@uslspecialityproducts.com  
W: www.matacryl.com / www.uslspecialityproducts.com



#### UK & Ireland Address

Kingston House, 3 Walton Road, Pattinson North, Washington, Tyne & Wear, UK  
T: +44(0)191 416 8360 E: info@uslspecialityproducts.com  
W: www.matacryl.com / www.uslspecialityproducts.com